



The INDEPENDENT Model

The walk-in bath for those with special needs



SPECIFICATIONS

The Windsor 'Independent' bath is the model for those with special needs who wish to remain independent. This slide-in bathtub is perfect for those needing wheelchair/hoist access or those looking ahead to future needs.

The 'Independent' is the same size as a normal bath for those requiring a bath with large inside dimensions.

The panel underneath the door is removable to allow use of a lifter, such as the Arjo Maxi-Lift,

This model is for very tall people [6'4" / 137cm +] or those over 150 kg.

NOTE: The 'Access' model is recommended for most people, as it avoids the risk of a normal sized person slipping into the footwell part of the bath.

Dimensions (L/W/H):

60" x 31" x 40" (152cm x 79.5cm x 101.6cm) Allow an additional 42" for door swing

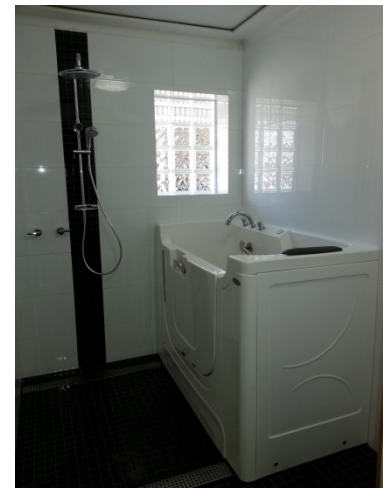
Product Features:

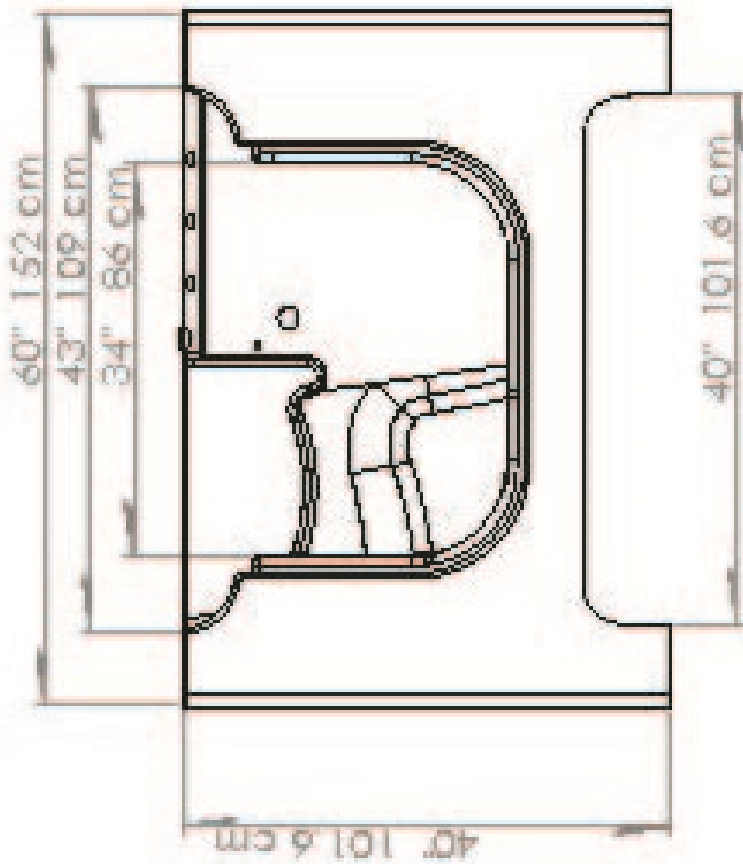
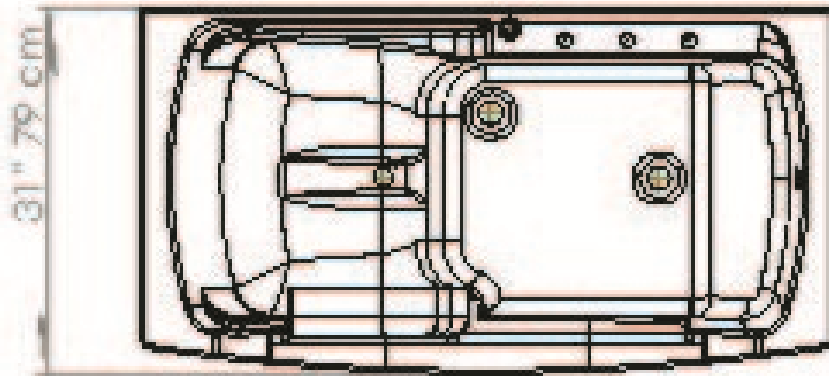
- FITS THROUGH AN AUSTRALIAN STANDARD DOOR SIZE
- For people who prefer to slide transfer onto the seat, rather than having to step into the tub.
- Replaces and fits into the space of a standard existing bathtub
- Height of seat is 21" for easy accessibility
- Right or left door models – outward opening door
- Easy opening, non-leak, door with locking handle
- Door is 37.5" wide (allow 40" for full door swing)
- Quick Draining System
- Fast draining Hepflex drainage, fast-fill tap set
- Stainless steel frame
- Made of marine-grade gel-coat fibreglass
- Moulded seat and back with seat and head cushions

The fibreglass bodies of these baths are made for us by the same people who supply the biggest vendor of walk-in baths in the USA

Optional:

- Hydrotherapy air-spa system from CG Air in Canada. This is not a standard pool spa, but a specialist hydrotherapy system from one of the worlds leading suppliers.
- Purpose designed to alleviate pain symptoms from rheumatism, arthritis and other similar painful conditions.
- System purges itself between uses to help prevent cross infection.
- Custom made Australian fast fill taps. Standard taps take much longer to fill your bath.
- A 50mm drain via a Hepflex pipe for fast draining. A standard ribbed 30-40mm drain hose keeps you waiting longer before you can get out.
- Enclosed on 3 sides
- A real hydrotherapy air-spa option, not a pool spa.
- Comes complete with fast fill tap set and all drainage fittings. This will reduce you installation cost.
- Comes with removable seat and head cushions
- Australian Standards Compliant fittings





INDEPENDENT PLAN